

Instruction manual



THS 1902
2 x 30W RMS
CLASS D



The installation of this product must be carried out by a qualified professional

Index

- 01 • Introduction**
 - Presentation
- 02 • Important recommendations**
 - Audio sources
 - Package contents
- 03 • Front panel**
- 04 • Front panel (Cont.)**
 - Rear panel
- 05 • Remote control functions**
- 06 • Bluetooth**
 - Bluetooth use example
- 07 • Example of using RCA connection**
 - Connect control use example
- 08 • Connection examples - Ceiling Speakers**
 - Term of warranty
 - Technical assistance
- 09 • Technical features**

Introduction

Congratulations on purchasing a Taramps product.

Developed in a modern laboratory, with the latest technology and highly qualified professionals. This manual explains all features, operations, and guidelines to address any questions that may arise during installation. Take some time to read it carefully to ensure proper installation and to take full advantage of all the benefits this product offers.

If you still have any question after reading this manual, please contact our technical support at the following phone number: **18-3266-4050** or through our website **www.taramps.com.br/es**.

Presentation

The **THS 1902** is a 2 channels Receiver, developed with advanced technology to interact with different environments. Compact and powerful, it can be used in various applications, delivering high quality sound.

Product application examples:

- Background sound for stores, businesses, and clinics.

- In your leisure area, gourmet space, country house, etc. With its various audio input options, such as FM, Bluetooth, AUX, USB, it allows audio sources to be easily switched, giving the user flexibility in choosing the preferred audio.

The equipment has an automatic bivolt system, allowing it to be connected to any outlet between 90 and 240V. It features a switched mode power supply, which is more efficient in energy consumption. To turn the device on and off, use the ON/OFF switch located on the front panel. Keep it turned off when not in use.

If the product will not be used for a long period, we recommended unplugging it from the power outlet.

Important recommendations

- The THS 1902 must be installed in a stable and ventilated location, away from sources of heat and moisture. Avoid locations with direct sunlight exposure.
- Do not block the ventilation holes on the sides of the product.
- Avoid drops and impacts.
- Carefully observe the polarity and impedance of the speakers.
- Use appropriate cables according to the distance between the THS 1902 and the speakers.

The following table shows the recommended wire gauges according to the distances:

Up to 20m	Cables with gauge greater than or equal to	1 mm ² (17 AWG)
Up to 40m	Cables with gauge greater than or equal to	1,5 mm ² (15 AWG)
Up to 70m	Cables with gauge greater than or equal to	2,5 mm ² (13 AWG)
Up to 100m	Cables with gauge greater than or equal to	4 mm ² (11 AWG)


- In case of noise, check the installation to ensure that cables and connections are in good condition.

Audio sources

The THS 1902 has the following audio inputs:

1. USB:Flash drive input *
2. AUX: Auxiliary input and rear RCA standard input.
3. BLUETOOTH
4. FM Radio
5. Microphone inputs (P10 standard)

*The connected device must contain music in MP3 format to be recognized by the equipment.Maximum supported size: 64GB.

 We recommend always having realible antivirus software to avoid issues with the flash drive when connecting it to the product. Infected devices may cause undesirable effects on the THS 1902, such as slow music reading and general malfunctions.

Do not use the USB input to connect to a computer or to charge other devices with batteries.

Package contents

- 01 Receiver Multi Channel THS 1902



- 01 Remote control

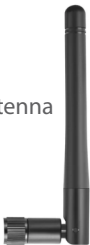


- 01 12V Power - 3 Amperes

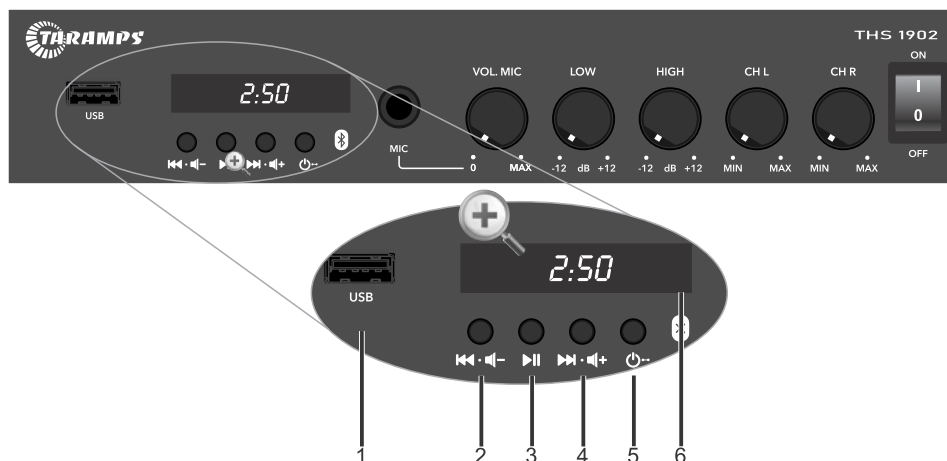


illustrative images

- 01 Bluetooth antenna



Front panel



1 - USB: Flash drive input.

2 - Track - /Volume -:

Short press: Rewinds the music tracks in USB / BLUETOOTH source options. Decrease the FM tuning frequency by 0.1 MHz.

Long press: Decreases the master volume. Automatically searches for the previous FM station.

3 - Play / Pause:

Short press: Pauses or plays the music for USB / BLUETOOTH. Advances to the next saved FM station preset.

Mutes the AUX input.

Long press: Searches for an FM station and saves it to memory.

4 - Track + /Volume +:

Short press: Skips music tracks in USB / BLUETOOTH source options. Increases the FM tuning frequency by 0.1 MHz.

Long press: Increases the master volume. Automatically searches for the next FM station.

5 - Mode / ON/OFF:

Short press: Selects the functions: USB / AUXILIAR / BLUETOOTH / FM.

Long press: Turns the player on or off, leaving only the microphone input active.

6 - Display LED - Remote control IR sensor: For better communication between the remote control and the unit, aim the control at this point on the display.

Front panel (cont'd)



9 - MIC: 1/4 microphone input.

Recommendations: The microphone signal has low amplitude, therefore improper use may cause unwanted noise. Use high quality cables and connectors, avoid coiling the cable, and keep away from the speakers while in use, as this may cause feedback.

10 -VOL MIC: Microphone volume adjustment. If the microphone is not in use, it is recommended to keep the volume at minimum. The MIC input is with the other audio sources. To keep only the microphone active, turn off the player using the MODE key.

11 - EQUALIZER: Equalization adjustment of the channels:

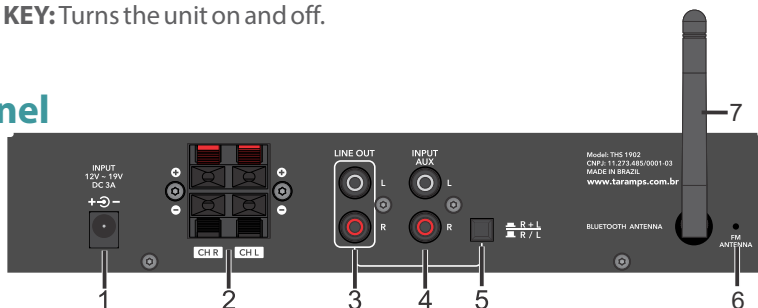
LOW = Adjusts the Bass frequencies.

HIGH = Adjusts the Treble frequencies.

12 -VOL : Adjusts the output volume.

13 - ON/OFF KEY: Turns the unit on and off.

Rear panel



1 - POWER SUPPLY INPUT: Connect the original power supply that comes with the product.

Caution: It is not recommended to use power supplies with voltage and current outside the specified.

2 - SPEAKER OUT: For connecting the speakers. Follow the indicated polarity and the recommended minimum impedance of 1,33.

3 - LINE OUT: The LINE OUT output allows sending the audio signal (non amplified) to another device, such as a THS 3600 or an active subwoofer amplifier. This signal goes through the unit's equalization settings (LOW and HIGH).

4 - INPUT AUX: L and R input (RCA).

5 - SWITCH: With the key in the R/L position (not pressed), the configuration is stereo.

6 - FM ANTENNA: External antenna to improve FM signal reception. Position the antenna in the best way to obtain FM reception.


7 - BLUETOOTH ANTENNA: External antenna to improve bluetooth range reception.

Remote control functions

The THS 1902 comes with a compact remote control, allowing you to operate the unit's functions from a distance with ease.



 **ON / OFF:** Press this button to turn off the player.

 **MODE:** Changes the audio signal sources (USB, BLUETOOTH, AUX, FM).

MUTE



PLAY / PAUSE: Pauses or starts music playback for USB/BLUETOOTH.

 **FM: Short press:** Skips to the next saved FM station preset.

Long press: Scans for FM stations and saves them to memory.

TRACK- / FOLDER- / FM-:



TRACK- Skips back to the previous music track (short press)

FOLDER- Goes back to the previous folder (long press)

FM: Short press: Decreases the frequency by 0.1 MHz.

Long press: Automatically searches for the previous station.

TRACK+ / FOLDER+ / FM+:



TRACK+ Skips to the next music track (short press)

FOLDER+ Skips to the next folder (long press)

FM: Short press: Increases the frequency by 0.1 MHz.

Long press: Automatically searches for the previous station.

EQUALIZER: Pop / Rock / Jazz / Country / Normal.

Does not work in AUX mode.



FM: Short press: Skips back to the previous saved FM station preset.

VOL-: Lowers the volume



VOL+: Raises the volume



REPEAT: Mp3 repeat / Playback options



NUMERIC KEYS: FM: Long press saves FM station.

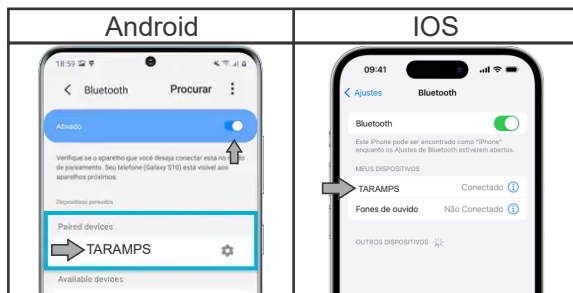
OBS: The SCN, REC and STOP keys have no function.

Bluetooth

When selecting the Bluetooth function (identified with "bt" on the display), the THS 1902 waits for a Bluetooth connection. Search for the device called "TARAMPS" using your phone, tablet, PC or other and match it.

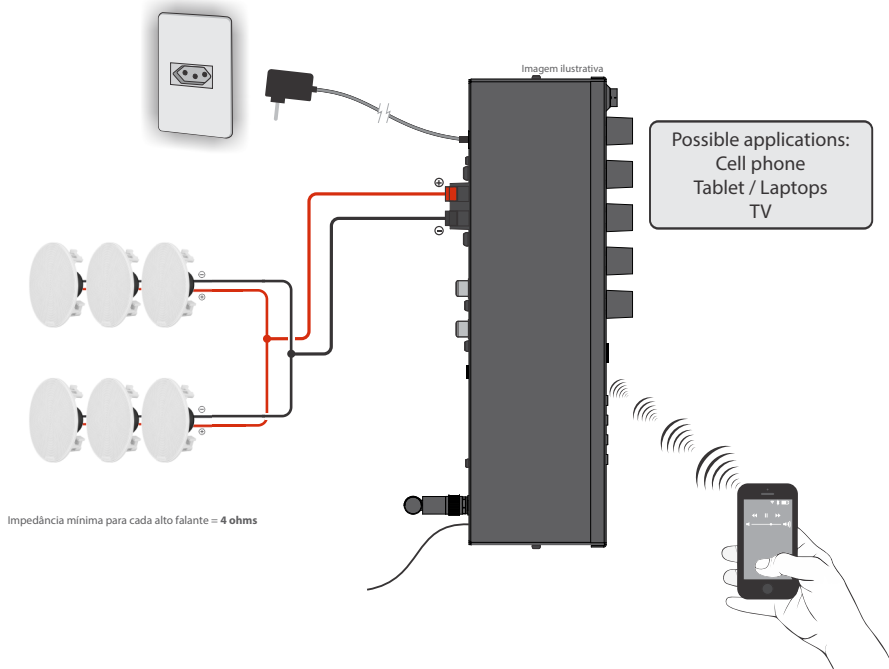
- To connect to a new device, disconnect the current one and make the new Bluetooth pairing.

Bluetooth specification: class II with a 50m maximum range and may vary according to the environment (such as walls) and the connected device.



For other devices the connection system is similar (consult manufacturer's manual)

Bluetooth use example

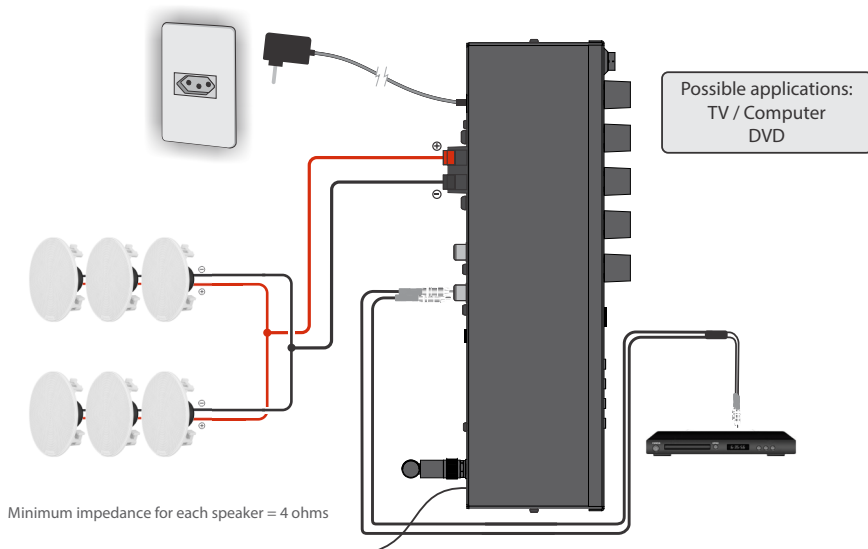


*Some TVs have an audio output system via Bluetooth. If your TV has this feature, it's possible to transmit the audio to the THS 1902.

Consult your TV manufacturer's manual.

Example of using RCA connection

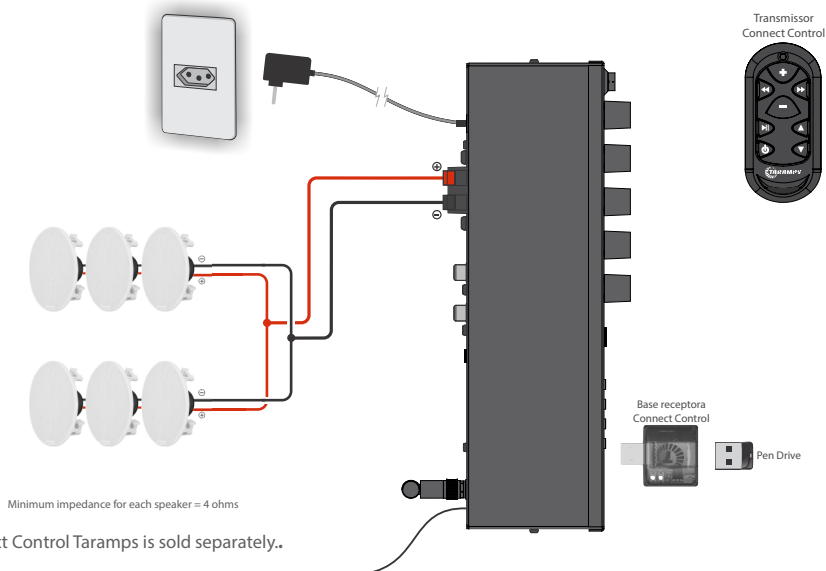
Select the AUX function on the "SOURCE" key.



Connect control use example (Long range transmitter)

The THS 1902 is compatible with the CONNECT CONTROL, TARAMPS long range remote control which allows you to control your sound over wide distances and without the need to point the control at the device. The THS 1902 does not lose the functionality of the USB port, as the connect control allows a Flash Drive to be plugged into its USB port.

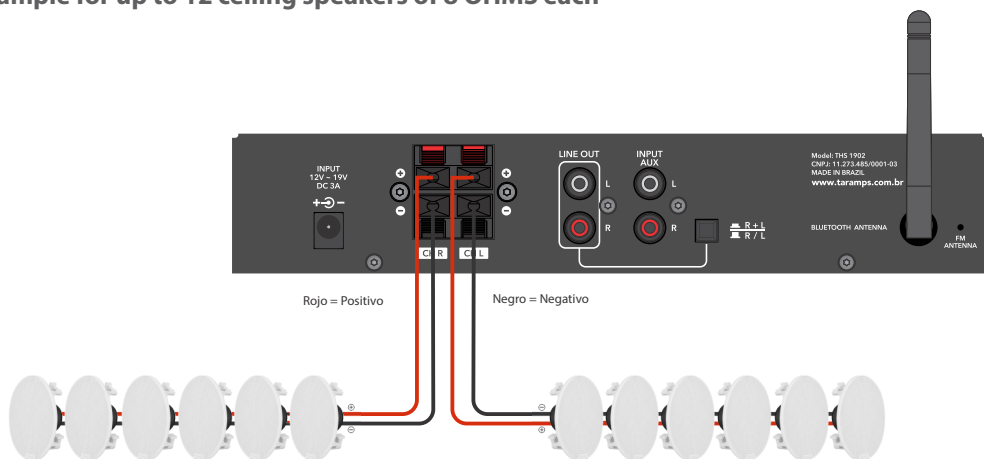
* For more details on the CONNECT CONTROL TARAMPS functionalities consult in its manual on the website.



OBS.: Connect Control Taramps is sold separately..

Connection examples - Ceiling speakers

Example for up to 12 ceiling speakers of 8 OHMS each



For this kind of connection use cables with a minimum gauge of 1.5 mm²(15 AWG) for up to 40 meters (131,2ft). For long distances, consult the table on page 02 in "Important recommendations".

It is necessary to make connections in parallel as shown in the example, to match impedance. For other types of projects and installations, consult our technical support.

Term of warranty

TARAMPS, located at Júlio Budisk highway, SN, KM 30 – Alfredo Marcondes, SP - Brazil, ZIP CODE 19180-120, warrants this product against any defects on terms of project, making, assembling, and/or with solidarity, due to project vices which cause it improper or inadequate to its original use within 12 months from the date of purchase. In case of defect during the warranty period, TARAMPS responsibility is limited to the repairing or replacement of the device of its own making.

This warranty excludes:

- Damaged products by improper installation, water infiltration, violation by unauthorized individuals;
- Tamper or torn warranty seal;
- Cases in which the product is not used in adequate conditions;
- Defects caused by accessories, modifications or features attached to the product;
- The product with damage from falling, bumps or nature related problems (flooding, lightning, etc);
- Warranty card is not properly filled or torn;
- Costs involving uninstallation, reinstallation of equipment as well the shipment to the factory;
- Damage of any kind, due to problems in the product, as well as losses caused by discontinued use of the product.

Technical assistance

For international support, check on our website:

www.taramps.com.br/en/rede-de-assistencias-tecnicas or contact direct the factory support:

Phones: +55 18 3266-4050 / +55 18 99749-3391

E-mail: service@taramps.com.br

Technical features

TARAMPS THS 1902:_____	Receiver Mono Channel Classe D
Number of channels:_____	02
RMS Power:_____	60 W (30W + 30W) ABNT NBR IEC 60268-3
Minimum output impedance_____	1.33 Ohms
AUX Input sensitivity:_____	200 mV
MIC sensitivity:_____	10 mV
AUX input impedance:_____	10 K Ohms
MIC input impedance:_____	2.2 K Ohms
Frequency response (equalizers at 0dB):	20 Hz ~ 20 KHz (-3dB)
Typical operation of 2 way equalizer:	
Low:_____	±15 dB - 90 Hz
High:_____	±15 dB - 7 KHz
Power supply:_____	90 ~ 240 V AC
Standby power consumption:_____	1.4 W
Max. consumption:_____	115 W
Protection systems:_____	Output protection against short circuit and overheating.
Signal to noise ratio:_____	>80 dB
FM frequency range:_____	76 MHz ~ 108 MHz
Dimensions:_____	250 x 47 x 118 mm (9.84" x 1.85" x 4.65")
Product weight:_____	0.55 Kg (1.21 lb)
Power supply weight:_____	0.10 Kg (0.22 lb)

The values mentioned are typical and may change due to the tolerance of components or the manufacturing process.

For more information or questions visit our website or contact TARAMPS support.



Taramps reserves the right to modify the contents of this manual without prior notice and not to apply the modifications to units previously produced.



+55 18 3266-4050

Manufactured by:
TARAMPS ELECTRONICS LTDA
CNPJ: 11.273.485/0001-03
Address: Júlio Budisk RD, SN, KM 30
Alfredo Marcondes - SP
Made in Brazil
www.taramps.com.br