

Instruction manual



XPRO234 ProAudio Electronic Crossover



This product must be installed by a qualified professional.

Index

- 01 • Introduction**
 - Important recommendations
- 02 • Presentation**
 - Audio sources
 - What's in the box
 - Safety
- 03 / 04 • Front panel**
- 05 • Rear panel**
- 06 • Remote control functions**
- 07 • Bluetooth**
 - Stereo connection example
- 08 • Mono connection example**
- 09 • Technical specifications**
- 10 • Warranty terms**
 - Customer service

Introduction

Thank you for choosing a Taramps product.

Developed in a modern laboratory, using cutting-edge technology and highly qualified professionals.

This manual explains all functions, operations, and troubleshooting instructions to assist during installation. We recommend taking a moment to read it carefully, which will ensure proper setup and allow you to enjoy all the benefits this product offers.

If you still have questions after reading this manual, contact our technical support team at **+55 18 3266-4050** or visit our website: www.taramps.com.br.

Important recommendations

- To ensure proper use, read this manual before using the product. It is important that you know the **CAUTION** contained here.
- The product must be installed in a firm and sanded location, long from air, humidity, water or close to heat sources;
- Installation must be done by a qualified professional;
- Avoid places with direct sunlight.
- Do not obstruct the ventilation openings on the sides.
- Avoid crashes and impacts.
- Observe polarity carefully. NEVER reverse polarity.
- Whenever you remove the product, remove all connections as well as disconnect it.
- Use cables and connectors of good quality, as dirty cables cause damage to the product, interference and noise.
- If the product requires maintenance, it must be sent to an authorized location. This product does not require maintenance for the user.
- Disconnect the product from the electrical network during storms or when leaving it out of use for a prolonged period.
- If you want to discard, do not play non-domestic games. It must be collected by a waste disposal service for used electronic products, for proper recycling.

Presentation

The **X PRO 234 crossover** is the perfect solution for those who want to fine-tune every audio detail with frequency filtering, bass/mid/treble equalization, and volume control—delivering peak performance from your speaker system.

Additionally, the device features a built-in player with multiple connection options such as Bluetooth, USB, memory card, and front auxiliary (P2) input, enabling playback from various sources. It also includes an optical input—ideal for connecting to TVs.

With a 1U rack height (1 rack unit = 44.45 mm), the X PRO 234 is auto-voltage and can be connected to any outlet between 90V and 240V. Its switching power supply ensures higher energy efficiency, making it more economical.

To turn the unit on/off, use the ON/OFF switch located on the front panel. When not in use, keep the unit turned off. If you won't be using it for a long period, we recommend unplugging it from the power outlet.


This product uses a plug according to the Brazilian NBR 14136 standard. For use in other regions, a compatible adapter must be used.

Audio sources

The X PRO 234 crossover offers the following audio input options:

1. USB: For USB flash drives*
2. MICRO SD CARD*
3. AUX (front): Standard P2 auxiliary input
4. BLUETOOTH
5. FM RADIO
6. OPTICAL input
7. XLR input

*The connected device must contain MP3 files to be recognized. Max supported storage: 64GB.

 We strongly recommend using antivirus protection to avoid issues with USB drives or Micro SD cards when connecting them to the device. Infected devices may cause malfunction, such as slow reading or general failure.

Do not use the USB input to connect to computers or to charge battery-powered devices.

What's in the box

- **01** X PRO 234 Crossover
- **01** Optical Cable
- **01** Remoto Control
- **01** Bluetooth Antenna

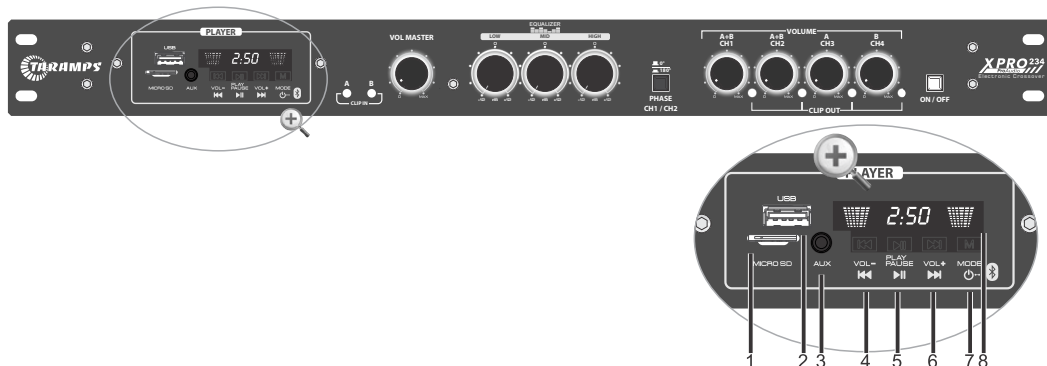
Safety

As you read this manual, pay attention to the safety symbols.



CAUTION This symbol with “**CAUTION**” is intended to alert the user to the presence of important instructions. Failure to heed the instructions will result in risk of injury to user or product damage.

Font panel



1 – MICRO SD: Micro SD memory card slot.



(The card must be positioned as shown in the image, with the terminals facing upwards)

2 – USB: USB flash drive input

3 – AUX (P2 jack): Receives audio from smartphones, tablets, MP3 players, PCs, etc.
Use quality cables to avoid noise interference.

4 – Track- / Volume-

Short press: Rewinds tracks (USB/SD/Bluetooth).

Decreases FM frequency by 0.1 MHz.

Long press: Decreases master volume. Auto-searches the previous FM station.

5 – Play / Pause

Short press: Play/Pause USB/SD/Bluetooth tracks.

Switches to next FM memory slot. Mutes AUX input.

Long press: Auto-scan FM stations and saves them.

6 – Track+ / Volume+

Short press: Skips to next track (USB/SD/Bluetooth).

Increases FM frequency by 0.1 MHz.

Long press: Increases master volume. Auto-searches the next FM station.

7 – Mode / ON / OFF

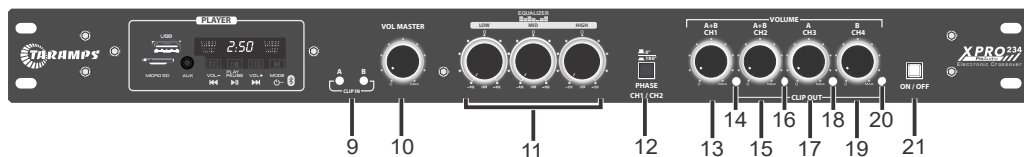
Short press: Switches modes: USB / SD / AUX / Bluetooth / FM

Long press: Turns the player ON or OFF

8 – LED Display – IR Sensor

Point the remote control directly at this sensor for best communication.

Front panel (continuation)



9 – CLIP IN: Flashes with the music to indicate that channel A or B input signal is reaching 8V RMS (start of clipping).

10 – MASTER VOL: Controls overall volume for Bluetooth, USB, Micro SD, FM, AUX, OPTICAL, and balanced inputs A & B.

11 – EQUALIZATION: Frequency band adjustments: LOW = bass. MID = midrange. HIGH = treble.

12 – 0° / 180° Phase Inverter: Reverses phase by 180° on outputs 1 and 2 (to correct phase cancellation).

13 – VOLUME CH1: Adjusts CH1 output. Outputs sum of balanced inputs A and B, or R+L from player or optical.

14 – CLIP OUT CH1: Flashes when CH1 output signal reaches 8V RMS (start of clipping).

15 – VOLUME CH2: Adjusts CH2 output. Same behavior as CH1.

16 – CLIP OUT CH2: Flashes when CH2 output reaches 8V RMS.

17 – VOLUME CH3: Adjusts CH3 output.

- MONO mode: Receives signal from balanced input A.

- STEREO mode: Also receives from input A.

- With player or optical: CH3 outputs right channel.

18 – CLIP OUT CH3: Flashes when CH3 output reaches 8V RMS.

19 – VOLUME CH4: Adjusts CH4 output.

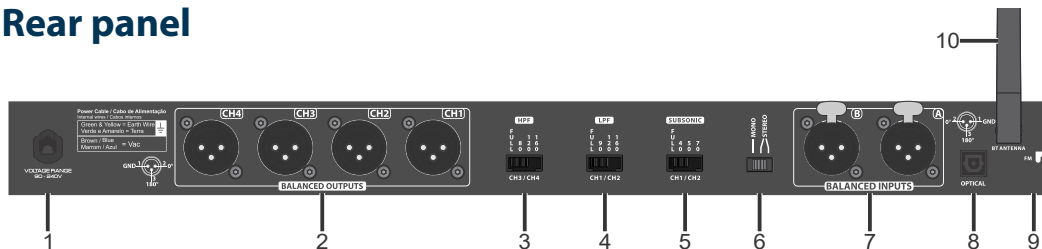
- Always outputs balanced input B signal.

- With player or optical: CH4 outputs left channel.

20 – CLIP OUT CH4: Flashes when CH4 output reaches 8V RMS.

21 – ON/OFF Button: Powers the unit on/off. Lights up blue when on.

Rear panel



1 – POWER CABLE: Connect to AC outlet (90V to 240V).

2 – CH4, CH3, CH2, CH1: Balanced audio outputs.

3 – HPF (High-Pass Filter) for CH3/CH4:

FULL: Full range

80: 80Hz HPF, 24dB/oct slope

120: 120Hz HPF, 24dB/oct

160: 160Hz HPF, 24dB/oct

4 – LPF (Low-Pass Filter) for CH1/CH2:

FULL: Full range

90: 90Hz LPF, 24dB/oct

120: 120Hz LPF, 24dB/oct

160: 160Hz LPF, 24dB/oct

5 – SUBSONIC (HPF for CH1/CH2):

FULL: Full range

40: 40Hz HPF, 24dB/oct

50: 50Hz HPF, 24dB/oct

70: 70Hz HPF, 24dB/oct

6 – MONO/STEREO Selector for balanced inputs:

·MONO: Connect only to input B; the signal is duplicated to A. All outputs receive input B signal.

·STEREO: Requires two cables (A and B). CH1/CH2 = A+B mix, CH3 = A, CH4 = B.

7 – A, B: Balanced audio inputs.

8 – OPTICAL: Optical input.

9 – FM ANTENNA: External antenna for better FM reception.

10 – BLUETOOTH ANTENNA: External antenna for improved Bluetooth signal.

Remote control functions

The X PRO 234 includes a compact remote control for convenient wireless operation.



 **ON/OFF:** Turns player ON/OFF

 **MODE:** Switches between USB, BLUETOOTH, SD, AUX, FM

 **MUTE**

 **PLAY/PAUSE:** Pauses or resumes USB/SD/BT playback

FM: Short press: Next saved station

Long press: Auto scan and save stations

 **TRACK:**

Short press: Previous track

Long press: Previous folder


FM: Decrease frequency by 0.1 MHz (short), auto-search previous station (long)

TRACK:

 **Short press:** Next track

Long press: Next folder

FM: Increase frequency by 0.1 MHz (short), auto-search next station (long)

 **EQ: Selects equalizer preset:** Pop / Rock / Jazz / Country / Normal (not available in AUX mode)

 **VOL-:** Decrease volume

 **VOL+:** Increase volume

 **REPEAT:** MP3 repeat modes

NUMBER KEYS (0–9):

FM: Long press to save the station

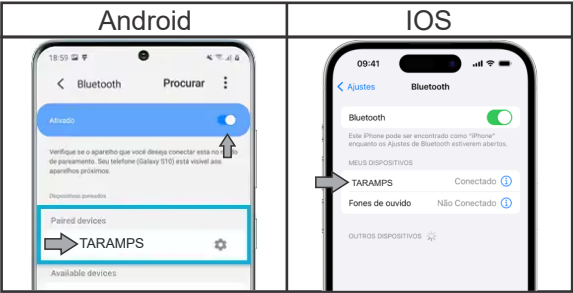
NOTE: SNC, REC, and STOP buttons have no function.

Bluetooth

When the Bluetooth function is selected (displayed as “bt” on the screen), the Crossover X PRO 234 will enter pairing mode. From your smartphone, tablet, computer, or other Bluetooth-enabled device, search for “TARAMPS” and complete the pairing process.

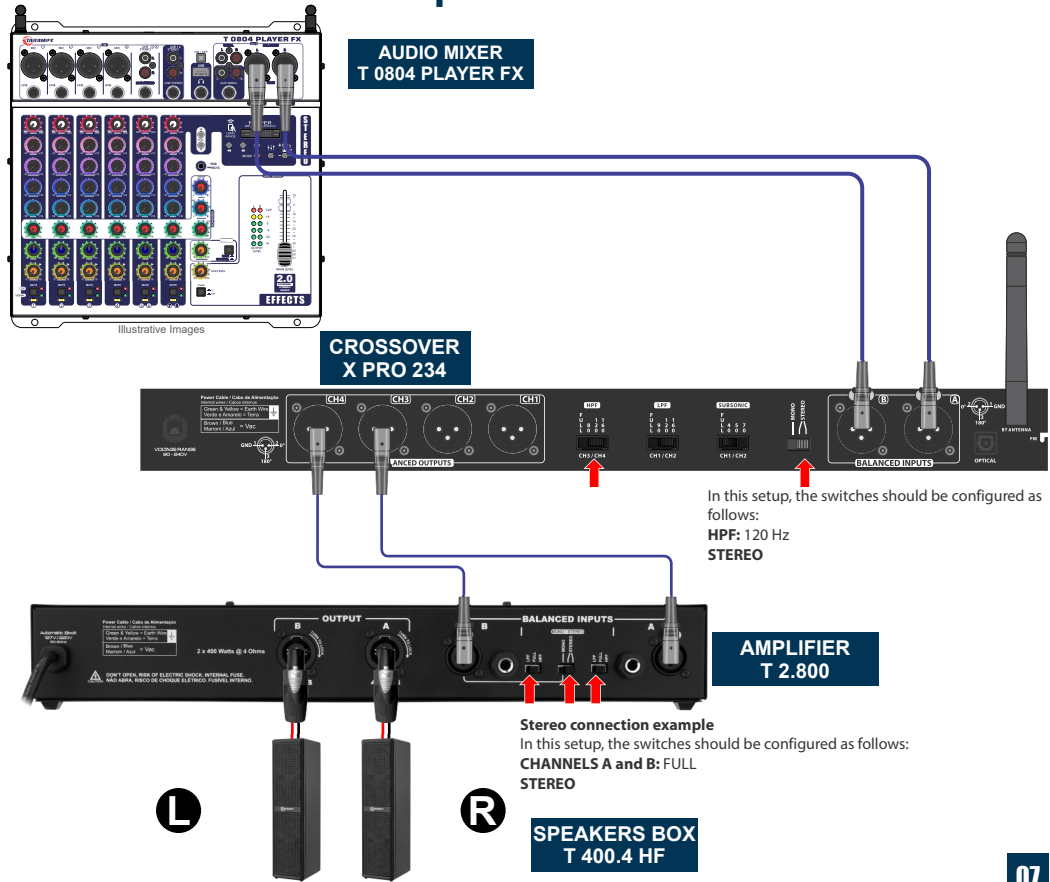
To pair a new device, first disconnect the currently connected device, then repeat the Bluetooth pairing process.

Bluetooth specification: Class II with a maximum range of up to **50 meters (164 feet)**. Actual range may vary depending on the environment (walls, furniture, etc.) and the connected device.

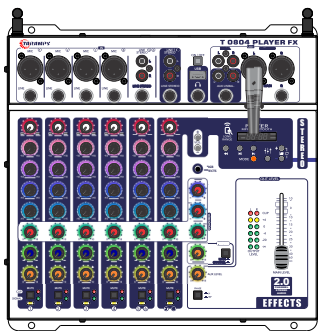


For other devices the connection system is similar (consult the manufacturer’s manual).

Stereo connection example



Mono connection example



MESA DE SOM
T 0804 PLAYER FX

AUDIO MIXER
T 0804 PLAYER FX



In this setup, the switches should be configured as follows:
HPF: 120 Hz
LPF: 120 Hz
SUBSONIC: 40 Hz
MONO



AMPLIFIER
T 2.800

In this setup, the switches should be configured as follows:
CHANNEL B: FULL
STEREO
CHANNEL A: FULL

SPEAKERS BOX
T 1200.1 LF +
T 400.4HF

Technical specifications

Balanced Inputs:	XLR, A - B
Input Impedance:	Symmetrical 160K Ω , asymmetric 70K Ω
Maximum Input Level:	8V RMS - 20 dBu
Balanced Outputs:	XLR, CH1-CH2-CH3-CH4
Output Impedance:	Symmetrical 18K Ω , asymmetric 8K Ω
Maximum Output Level:	8V RMS - 20 dBu
Frequency Response (-3dB):	4Hz ~ 50KHz
Total Harmonic Distortion (T.H.D):	<0,06%
Signal-to-noise Ratio (SNR):	100dB
Crossovers	
SUBSONIC:	40Hz – 50Hz – 70Hz - Butterworth 24dB/8 ^a
LPF:	90Hz – 120Hz – 160Hz - Butterworth 24dB/8 ^a
HPF:	80Hz – 120Hz – 160Hz - Butterworth 24dB/8 ^a
Equalizers	
Low (bass):	± 12 dB - 80Hz
Mid (midrange):	± 12 dB - 2KHz
High (treble):	± 12 dB - 12KHz
Consumption at 127Vac:	14W
Consumption at 220Vac:	15W
FM Frequency Range:	76 MHz to 108 Mhz
Dimensions (W x H x D):	18.98" x 1.75" x 6.77" (482 x 44,5 x 172mm)
Weight:	4.28 lb (1,94 Kg)



Taramps reserves the right to change the contents of this manual at any time without prior notice and without any obligation to apply such changes to previously manufactured units.

Warranty terms

TARAMPS, located at Rodovia Júlio Budisk, KM 30, Alfredo Marcondes – SP, Brazil, 19180-120, warrants this product to be free from defects in materials and workmanship under normal use for a period of 12 months from the date of purchase.

If a defect arises during the warranty period, TARAMPS will, at its sole discretion, repair or replace the unit with a new or refurbished product.

This warranty does not cover:

- Damage resulting from improper installation, water exposure, or unauthorized repairs;
- Broken or tampered warranty seal;
- Misuse or operation outside of recommended conditions;
- Issues caused by accessories, modifications, or third-party components;
- Physical damage from drops, impacts, or natural events (such as flooding or lightning);
- Labor or shipping costs related to removal, reinstallation, or transportation;
- Any indirect damages, losses, or interruptions in product use.

Customer service

For international support, check on our website:

www.taramps.com.br/en/rede-de-assistencias-tecnicas or contact direct the factory support:

Phones: +55 18 3266-4050 / +55 18 99751-4273

E-mail: service@taramps.com.br



+55 18 3266-4050

Manufactured by:
TARAMPS ELECTRONICS LTDA
CNPJ / TAX ID: 11.273.485/0001-03
Júlio Budisk Highway, SN, KM30
Alfredo Marcondes - SP
Made in Brazil
www.taramps.com.br