

# Instruction manual



**AMPLAYER** **G2**  
400W MEDIA PLAYER AMPLIFIER



The installation of this product must be carried out by a qualified professional.

# Index

- 01 • Introduction**
  - Package Contents
- 02 • Safety Requirements**
  - Important Recommendations
  - Safety
- 03 • Panel functions**
- 04 / 05 / 06 • Panel functions (Cont'd)**
- 07 • Remote control functions**
- 08 • Output and power connector**
- 09 • Car dashboard installation**
  - AMPLAYER cleaning
- 10 • Installation**
  - Recommended wire gauge and fuse
- 11 • Stereo connection example**
  - Bridge connection example
- 12 • Bluetooth**
  - SYNC another remote control
- 13 • Technical specifications**
- 14 • Warranty terms**
  - Technical assistance

## Introduction

Please read this manual carefully before connecting or using the product. In case of doubts, please contact our technical support: **(18) 3266-4050** ou **www.taramps.com.br**.

### Congratulations on purchasing AMPLAYER G2!

Power and style for your vehicle. The AMPLAYER G2 is not only a car player, it is an integrated entertainment system that combines power, technology, innovative design, and versatility. This product includes a remote control, player, amplifier, and an RGB control module for LED strips or strobe lighting.

With 4 amplified channels of 100 Watts RMS, the AMPLAYER G2 delivers a sound quality.

The AMPLAYER G2 stands out not only for its performance, but also for its appearance. Its innovative design is complemented by a front lighting system with seven vibrant colors, allowing you to customize your car's ambience.

## Package contents

- 01 AMPLAYER



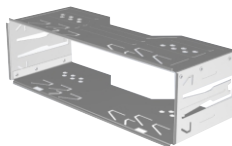
- 02 Wiring Harness



- 01 Remote control



- 01 Metal installation frame



- 02 Removal Key



- 01 Taramps brand cord



## Safety precautions

- To ensure proper use, read this manual before using the AMPLAYER. It is important that you are aware of the PRECAUTIONS contained herein.
- The installation of this product must be carried out by a qualified professional.
- Use safety glasses, insulated gloves, and the proper tools to install this product.
- This product must be used with 12V batteries. Always check the voltage before installation.
- Never install the AMPLAYER in locations exposed to moisture, or water. Make sure to install it away from the fuel tank, fuel lines, heat sources, and other parts of the vehicle.
- Make sure to install a protective fuse or circuit breaker near the battery. Follow the amperage specified in this manual. Using an incorrect fuse or circuit breaker may result in overheating, smoke, product damage, injury, or burns.
- Avoid routing wires over or through sharp edges. Use rubber or plastic grommets to protect any wires that pass through the vehicle's bodywork.
- Before making any connection to the AMPLAYER, disconnect the negative (-) terminal of the battery.
- During use, the external surface may become hot. Avoid touching the heat sink area and keep children away from the product.
- This product can produce high sound pressure levels. Continuous exposure to levels above 85dB to prevent hearing loss.
- Make sure the AMPLAYER is turned OFF before proceeding with any connection or disconnection of its connectors.
- If you wish to dispose of this product, do not throw it in household waste. It must be collected by an electronic waste disposal service for proper recycling.

## Important information

This product incorporates a high power Class D amplifier, which may degrade the reception of distant FM stations. To achieve the best FM reception, avoid routing the antenna cable together with the product's installation wiring.

LED strips may also interfere with radio, depending on the lighting effect, the chosen color, or the installation location.

The recommended wire gauge is 4mm<sup>2</sup> for the positive/negative wires and 0,75mm<sup>2</sup> for the remote and ACC wire.

As protection, a fuse (20A) must be installed near the positive terminal of the battery. See more details on page 10 of this manual.

## Safety

Throughout this manual, pay attention to the safety symbols.

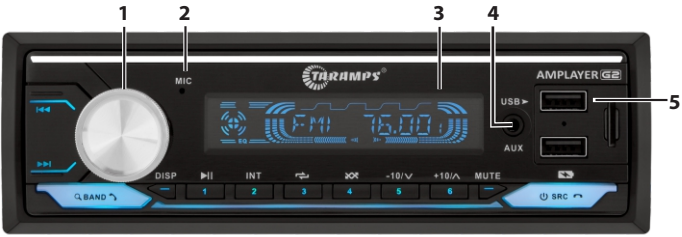
### Caution

This symbol as "Caution" is intended to alert the user to important instructions. Failure to follow the instructions may result in risks to the user or damage to the product.



Taramps reserves the right to modify the contents of this manual without prior notice and without any obligation to apply such modifications to units previously manufactured.

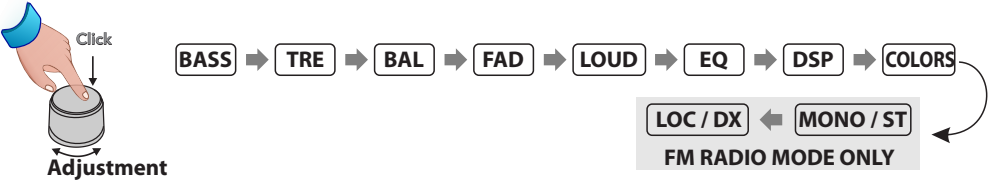
# Panel functions



## 1 - Rotary knob:

**Volume:** Increases or decreases the audio volume.

**Function adjustment:** Access the functions by pressing the center of the knob. To adjust a function, simply rotate the knob to the right or left.



**BASS:** Bass adjustment, allowing boost or attenuation of up to 7dB;

**TRE:** Treble adjustment, allowing or attenuation of up to 7dB;

**BAL:** Balance adjustment, distributes the signals between the left and right channels;

**FAD:** Fader adjustment, distributes the signals between the front and rear channels;

**LOUD:** Activates the loudness function;

**EQ:** Provides 6 equalization curves: Flat/Rock/Pop/Classic/Jazz/User (DPS);

**DSP:** Accesses the 7 band graphic equalizer (60Hz, 250Hz, 500Hz, 1KHz, 2KHz, 10KHz, 15KHz) with boost or attenuation of up to 7dB.



\*DSP RST: Resets the equalization values to zero.

## Colors:



## 2 - Mic: Hands free microphone.

**3 - LCD Display:** Displays FM radio frequency, track/folder number, signal source, song title, functions...

**4 - Aux:** Auxiliary J2 input for connecting another device (Ex.: Smartphones).

**5 - USB:** USB input for connecting a flash drive containing music files (max. recommended capacity is 32GB).

## Panel functions (continued)



**6 - SD:** Micro SD card slot for connecting a memory card containing music files.

**7 - Charger:** 5V output- max. 1A, dedicated for standard charging only.

**8 - Track ◀◀ / Tune -:**

### **FM RADIO**

**Short Press:** Decreases the FM tuning frequency by 0.1 MHz.

**Long press:** Automatically searches for the previous FM station.

### **Bluetooth**

**Short Press:** Previous track.

### **USB / SD**

**Short Press:** Previous track.

**Long Press:** Fast rewind.

**9 - Track ▶▶ / Tune +:**

### **FM RADIO**

**Short Press:** Increases the FM tuning frequency by 0.1 MHz.

**Long Press:** Automatically searches for the next FM station.

### **Bluetooth**

**Short Press:** Next track.

### **USB / SD**

**Short Press:** Next track.

**Long Press:** Fast Forward.

**10 - BAND/ANSWER/SEARCH:**

**Short press:** Switch between FM1/FM2/FM3, each option with 6 present stations.

### **FM RADIO**

**Long Press:** Performs an automatic search and stores the strongest signal stations.

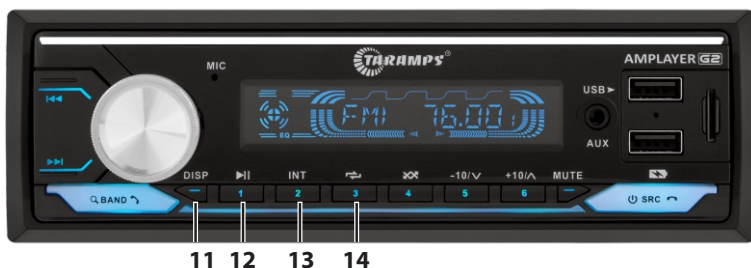
### **USB / SD CARD**

**Short Press:** Numeric track search function using the rotary encoder.

### **BLUETOOTH:**

**Short Press:** Answers incoming calls, redials the last number.

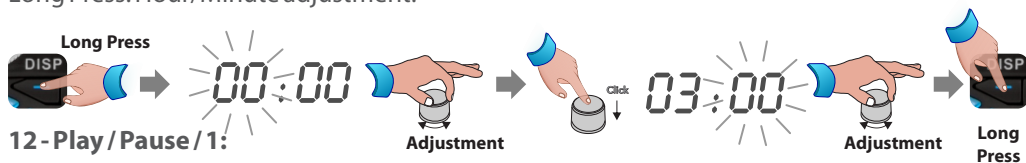
## Panel functions (continued)



**11 - DISP:** Function to switch between displaying the clock time or displaying playback information.

**Short Press:** Switches the display between playback information (track number, track name, folder name) or clock.

**Long Press:** Hour/Minute adjustment.



**12 - Play / Pause / 1:**

**FM Radio**

**Short press:** Selects the radio station from memory position 1.

**Long press:** Saves the station to position 1.

**Bluetooth / USB / SD**

**Short press:** Play/Pause

**13 - Int / 2:**

**FM Radio**

**Short press:** Selects the radio station from memory position 2.

**Long press:** Saves the station to position 2.

**Bluetooth / USB / SD**

Plays only the first 10 seconds of each track (intro scan).

**14 - Repeat / 3:**

**FM Radio**

**Short press:** Selects the radio station from memory position 3.

**Long press:** Saves the station to position 3.

**USB / SD**

**Short press:** One - Track repeat.

**Fod** - Repeat folder.

**All** - Repeat all.

## Panel functions (continued)



### 15 - Random /4:

#### FM Radio

**Short press:** Selects the radio station from memory position 4.

**Long press:** Saves the station to position 4.

#### USB / SD

**Short press:** Enables the random mode playback.

### 16 - Previous folder -10 /v /5:

#### FM Radio

**Short press:** Selects the radio station from memory position 5.

**Long press:** Saves the station to position 5

#### USB / SD

**Short press:** Skips back 10 tracks / **Long press:** Previous folder.

### 17 -Next folder +10 /^ /6:

#### FM Radio

**Short press:** Select the radio station from memory position 6.

**Long press:** Saves the station to position 6

#### USB / SD

**Short press:** Skips forward 10 tracks / **Long press:** Next folder.

**18 - Mute:** Disables the audio signal.

### 19 - Source (ON/OFF / Mode / END/ Reject call):

**With the AMPLAYER turned off:** Short press, turns on the unit

**With the AMPLAYER turned on:**

**Short press:** selects the functions: USB / BLUETOOTH / AUX / FM

**During a phone call:** Ends or rejects the call

**Long press:** Turns off the unit

**20 - Reset:** If you want to restore the factory default settings or in case the panel mal function, insert a metal tip (ex. an opened paper clip) and press for 2 seconds. After the unit turns off, turn in on again.

**Store FM stations:** To store stations, simply tune to the desired station and press and hold one of the preset keys (1 to 6). Press BAND to switch between FM1, FM2 and FM3 (18 presets in total).

# Remote control functions

**1 - Short press with the unit turned off:** Turns on the AMPLAYER.

**Short press with the unit turned on:** Selects the signal sources (USB, BT, FM, AUX)

**Long press:** Turn off the AMPLAYER.

**2 - Volume  $\oplus$ :** Increases the volume.

**3 - Volume  $\ominus$ :** Decreases the volume.

**4 - Track  $\ll$  / Tune  $\ominus$ :**

**FM Radio**

Decreases the FM tuning frequency by 0.1 MHz

**Bluetooth / USB / SD**

Next track

**5 - Track  $\gg$  / Tune  $\oplus$ :**

**FM Radio**

Increases the FM tuning frequency by 0.1 MHz

**Bluetooth / USB / SD**

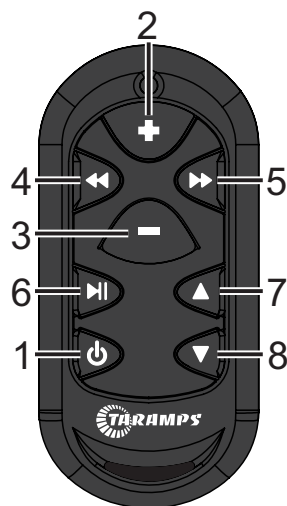
Previous track

**6 - Play / Pause  $\parallel$ :**

Starts or pauses music playback

**4 - Next folder  $\blacktriangle$**

**5 - Previous folder  $\blacktriangledown$**



## RGB effects change (via remote control)

It is possible to change the programmed effect on the LED strip and RGB strobe outputs using the remote control, as well as the SYNC button on the rear panel.

Note: The AMPLAYER panel color can only be changed using the volume encoder (page 3).

- Press  $\parallel$  and  $\blacktriangle$  With the product turned on;

- The front panel illumination will fast flash, indicating the RGB control mode.

-  $\oplus$  = Light intensity(Increase);

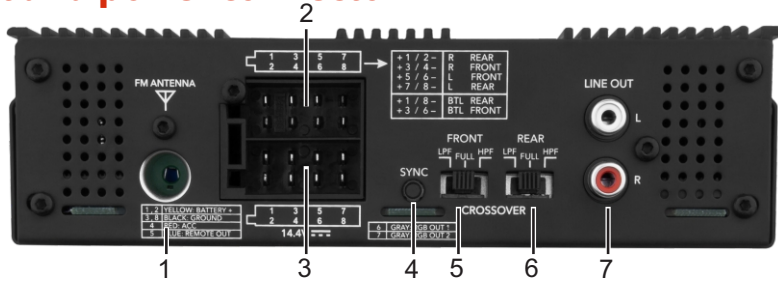
-  $\ominus$  = Light intensity(Decrease);

$\ll$  and  $\gg$  = Switches effect/color type;

$\parallel$  +  $\blacktriangle$  = Returns to audio functions control (The illumination stops flashing).



# Output and power connector



**1 - FM Antenna:** FM antenna input.

## 2- Speaker connector.

Refer to the wiring diagram on page 11.

For connections in STEREO mode, the minimum impedance is 2 OHMS per channel; in BRIDGE mode, it is 4 OHMS.

For speaker associations, the impedance to be considered is the resulting impedance.

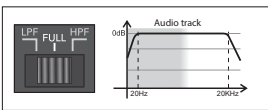
**3 - Power connector/ REM OUT / RGB OUT:** The yellow (+) wires from the connector must be joined and connected to the positive terminal of the battery using a cable with a minimum cross section of 4mm<sup>2</sup>. The black (-) wires from the connector must be joined and connected to the negative terminal of the battery using a cable of equivalent gauge to the positive cable. Refer to the wiring diagram on page 10.

**Red wire:** Ignition switched signal (ACC).

**Blue wire:** Output for antenna control or remote latput (for external amplifiers).

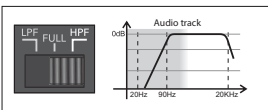
**4 - SYNC Key:** For remote control SYNC (page 12) or RGB effect change.

## 5 and 6- Crossover Front and Rear



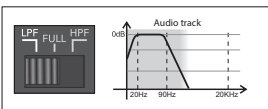
### Selector in the position - FULL

Amplifies the entire audio range, responding from 20Hz to 20kHz. This function is normally used when there is an external crossover in the system.



### Selector in the position - HPF - (HIGH PASS)

Amplifies signals from 90Hz upwards. This type of functions is used for the reproductions in mid bass and midrange speakers. A common example is two way kits and 6x9 speakers.



### Selector in the position - LPF - (LOW PASS)

Amplifies only sub bass and bass frequencies, as the response is limited to 90Hz (12dB/8°) the ideal cutoff for subwoofers.

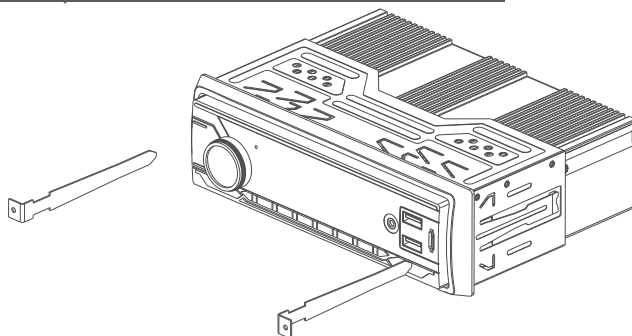
**7 - LINE OUT:** The LINE OUT output allows sending the audio signal (low level) to another device, such as an amplifier or an active subwoofer.

The signal from this output comes from the REAR channels and is not effected by crossover

## Car dashboard installation

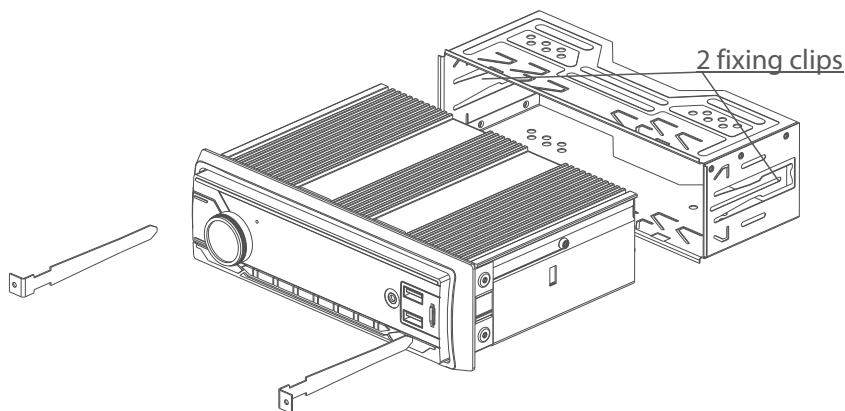
Position the removal keys as shown in the image below to detach the product's metal bracket. Remove the panel's plastic frame to access the key insertion points.

**Attention:** The front panel of the AMPLAYER is not removable.



Install the metal bracket into the slot provided for the radio in the vehicle's dashboard and bend the tabs to properly secure the metal bracket in the installation opening.

The AMPLAYER may not be compatible with other plastic or metal installation brackets. Use the supplied metal bracket to securely attach the unit to the dashboard.



## AMPLAYER Cleaning

The AMPLAYER panel can be cleaned with a soft cloth to avoid scratches, stains, or damage. Never use chemical, abrasive, or cleaning products .

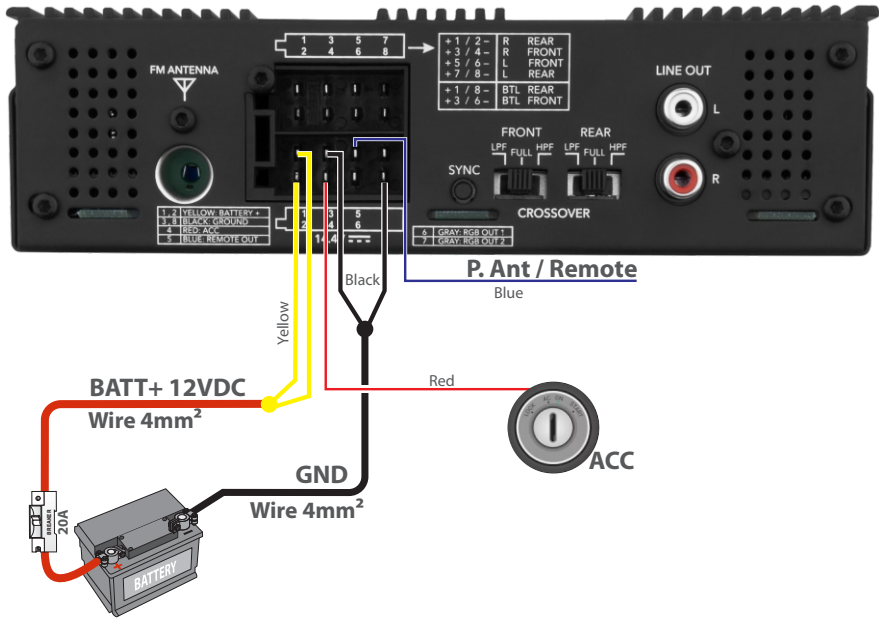
# Installation

**CAUTION** Any connection to the power, input, or output connectors must be made only with the AMPLAYER turned off.

## Recommended wiring gauge and fuse

Positive/negative power cable \_\_\_\_\_ **4mm<sup>2</sup>**  
ACC Cable \_\_\_\_\_ **0,75mm<sup>2</sup>**  
Antenna cable / Remote \_\_\_\_\_ **0,75mm<sup>2</sup>**  
Protective fuse or circuit breaker \_\_\_\_\_ **20A**

\*Calculated considering a maximum lenght of 4m. For longer distances, it will be necessary to increase the cable gauges.



**Caution** Before making any connections to the power terminals, make sure the vehicle's battery negative (-) terminal is disconnected.

\*It is necessary to join the two yellow wires (Batt+) and join the two black wires (GND).

**Do not use the vehicle's original wiring: Perform a new installation directly from the battery.**

The use of a **20A** fuse or circuit breaker near the battery is indispensable.

Using wiring with a gauge smaller than recommended causes power loss and overheating of the wiring.

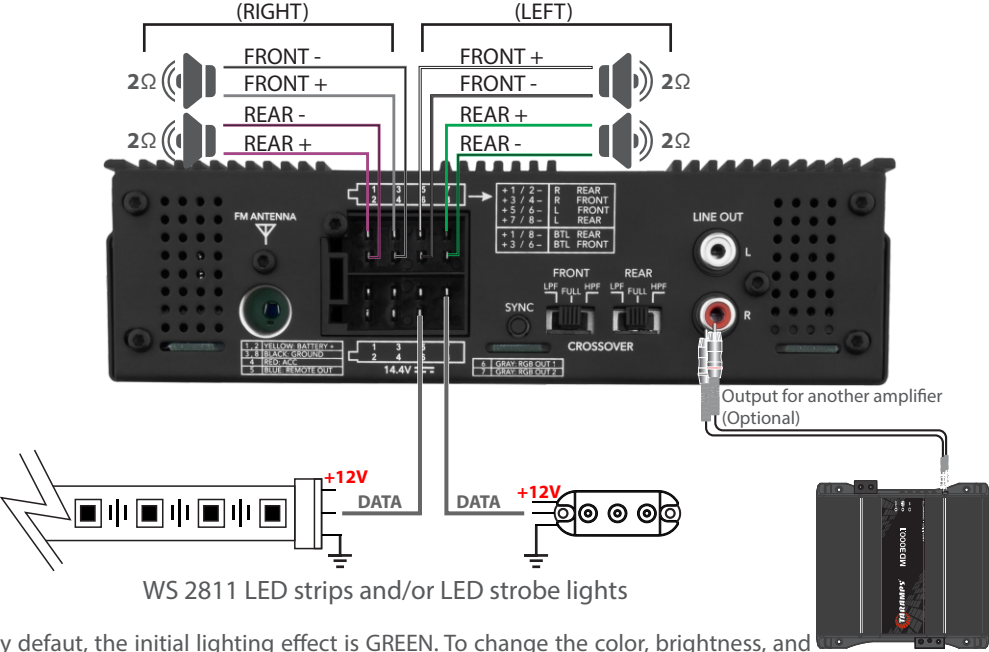
Observe polarity, never reverse the power cables, as this may damage the AMPLAYER.



The installation of this product must be carried out by a qualified professional.

# Stereo connection example

## 2 OHMS per channel (4 channels)

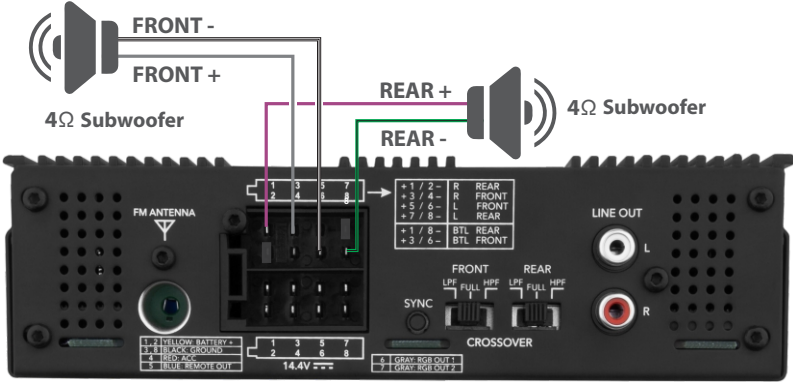


By default, the initial lighting effect is GREEN. To change the color, brightness, and effect type, use the remote control in RGB mode (Page 07) or simply press SYNC at rear panel.

# Bridge connection example

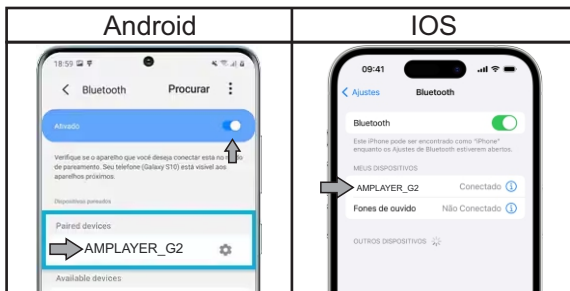
## 4 OHMS per channel (2 channels)

**IMPORTANT:** Unused wires must be insulated



## Bluetooth

- At any time, even with the AMPLAYER turned off (but with ACC active), it is possible to set up a connection. Search with your mobile phone and complete the pairing.
- To connect to a new device, disconnect the current one and perform new Bluetooth pairing.
- Specification Bluetooth: Class II with an average range of 10m.



For other devices, the connection procedure is similar (refer to the manufacturer's manual).

## SYNC another remote control

It is possible to use up to 3 remote controls simultaneously.

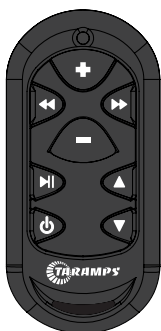
To synchronize a new remote control, follow the instructions:

1- Turn on the AMPLAYER.

2- Press and hold the SYNC button on the rear panel for 5 seconds.

3- The panel illumination will start flashing.

4- On the remote control, press the keys **HI** and **▲**. The panel stops flashing.  
(Check if the remote control is compatible)



*The new remote control must be TARAMPS brand, configured for FSK modulation. To switch between modulation types, follow the procedure below:*

*Press **◀** and **▶** simultaneously until the control's LED turns off. Check the number of LED flashes: 3 flashes=OOK/ASK / 4flashes=FSK*

# Technical specifications

Model:	Amplayer 400 G2
Number of channels:	04
Rated power @ 14.4VDC - 2 Ohms:	400W RMS (4 x 100W RMS)*
Rated power @ 14.4VDC - 4 Ohms:	240W RMS (4 x 60W RMS)
2 Bridged Channel - 4 Ohms:	400W RMS (2 x 200W RMS)*
Signals sources:	USB/SD/FM/Bluetooth/AUX
Formats and capacity (USB - SD):	MP3,WMA,APE e FLAC - 32Gb Max.
Bluetooth version:	V. 5.3
FM frequency range:	76 a 108MHz, 18 memórias
Auxiliary output RCA:	2V RMS
Output capacity RGB:	<b>LED STRIP:</b> up to 8.5meters(30 LEDS/m) or 4,25meters (60 LEDS/m) <b>LED STROBO</b> = up to 85 units
Cap. USB port (recharge):	Standard Charging 1A max.
Signal to Noise Ratio:	>85dB
Frequency response (Full Range):	20Hz a 20KHz (-3dB)**
Crossover	
HPF (High pass filter):	90Hz (-12dB/8ª) Fixed
LPF (Low pass filter):	90Hz (-12dB/8ª) Fixed
Protection system:	Output short circuit
Minimum supply voltage:	9VDC
Maximum supply voltage:	16VDC
Memory usage (ACC):	25mA
Power stand-by (ACC ON):	30mA
Power consumption on, without audio:	0.85A
Maximum power consumption:	37A
Musical power consumption:	18.5A
Installation space:	1 DIN - ISO7736:1984
Dimensions (L x A x P):	188 x 58 x 152mm
Weight:	1Kg

\*Rated power at 14.4VDC, 1KHz sinusoidal signal and THD < 10%.

\*\*Frequency response measured at 2 times the minimum impedance, in 4 channel mode.

\*\*\*The values as above are typical and may vary, due to electronic components tolerance or manufacturing process.



Taramps reserves the right to modify the contents of this manual without prior notice and without any obligation to apply such modifications to units previously manufactured.

## Declaration of conformity



## Warranty terms

TARAMPS, located at Júlio Budisk highway, SN, KM 30 – Alfredo Marcondes, SP - Brazil, ZIP CODE 19180-000, warrants this product against any defects on terms of project, making, assembling, and/or with solidarity, due to project vices which cause it improper or inadequate to its original use within 12 months from the date of purchase. In case of defect during the warranty period, TARAMPS responsibility is limited to the repairing or replacement of the device of its own making.

### **This warranty excludes:**

- Damaged products by improper installation, water infiltration, violation by unauthorized individuals;
- Tamper or torn warranty seal;
- Cases in which the product is not used in adequate conditions;
- Defects caused by accessories, modifications or features attached to the product;
- The product with damage from falling, bumps or nature related problems (flooding, lightning, etc);
- Warranty card is not properly filled or torn;
- Costs involving uninstallation, reinstallation of equipment as well the shipment to the factory;
- Damage of any kind, due to problems in the product, as well as losses caused by discontinued use of the product.

## Technical support

For international support, check on our website:

[www.taramps.com.br/en/rede-de-assistencias-tecnicas](http://www.taramps.com.br/en/rede-de-assistencias-tecnicas) or contact direct the factory support:

Phones: +55 18 3266-4050 / +55 18 99749-3391

E-mail: [service@taramps.com.br](mailto:service@taramps.com.br)



+55 18 3266-4050

Manufactured by:  
TARAMPS ELECTRONICS LTDA  
Tax ID: 11.273.485/0001-03  
Júlio Budisk Rd, SN, KM 30  
Alfredo Marcondes - SP  
Made in Brazil  
[www.taramps.com.br](http://www.taramps.com.br)