

INSTRUCTION MANUAL



Installation of this product must be carried out by a qualified professional.

TAS 408F

ACTIVE BOX WITH 1 8-INCH SPEAKER

The TAS 408F active box was designed to reproduce low frequencies, known as sub-bass. Responsible for reproducing deep and impactful sounds in receiver systems with a frequency response of (10Hz to 250Hz), it guarantees accurate and natural audio reproduction throughout its entire range.



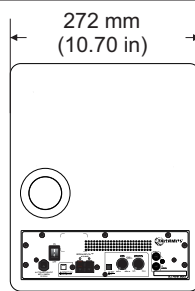
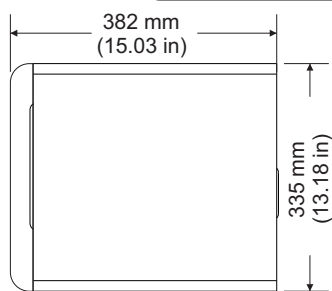
Technical Parameters

Power	400W Musical
Polegada	8 INCH
Input impedance	2K Ohms
Sensitivity	100 mV
Amplifier class	D
Frequency response (-3 dB)	10 Hz a 250 Hz
Crossover LPF	50Hz a 250Hz (-12dB/oitava)
Resonance frequency	29 Hz
Power tension	90 a 240 Vac (AUTOMATIC)
Maximum consumption	220Vac- 585W / 127Vac - 470W
Dimensions (AxLxP)	335 x 272 x 382 mm
Acoustic components	1 SPEAKER 8 INCH
Cone material	Polypropylene
Cabinet	Vented Box
Cabinet finishing	Laminate
Cor	Black Ébony
Fabric finishing	Black Fabric
Cabinet weight	12.5 Kg
Product warranty	12 Months

Product Dimensions



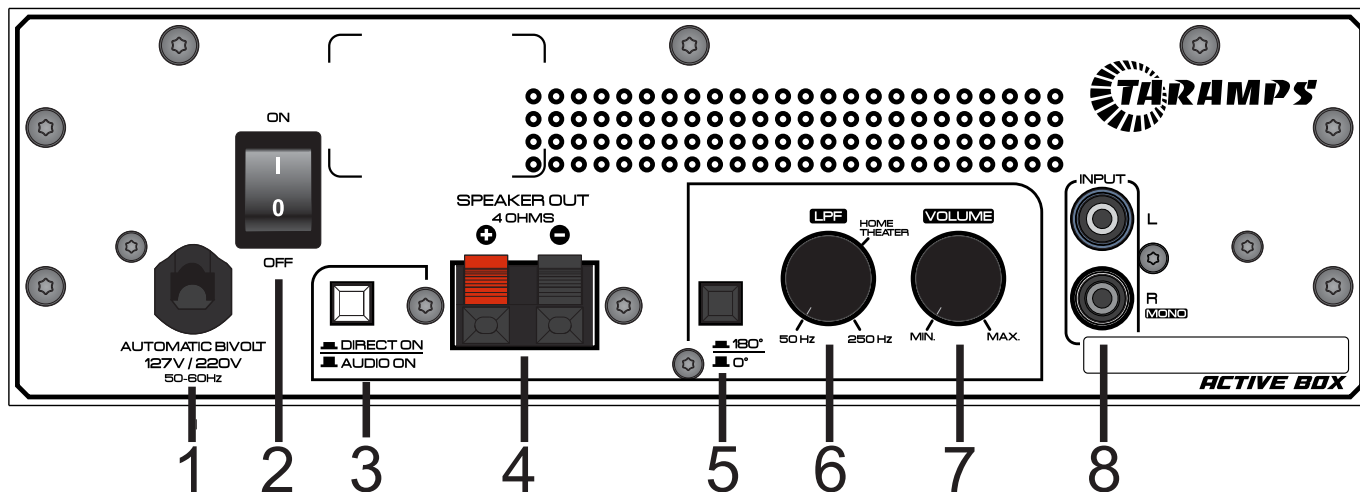
NOTA: To achieve better sound quality, it's important to position the back of your speaker close to the wall, at a distance between 10 and 20 centimeters



www.taramps.com.br

Rod. Julio Budisk SP 501 s/n, - Compl. KM 30-A/SP ZIP:19.180-000 Phone Number +55 (18) 3266-4050 National Registry(CNPJ): 23.372.795/0001-64

Note: Features, specifications and aesthetics are subject to change without notice.



1 - Power Cable: Connect the cable to the electricity network. This product operates with a power supply between 90 and 240 VAC.

2 - ON / OFF Switch:

The key puts the product on standby, leaving it ready to be turned on using the DIRECT ON / AUDIO ON key.

3 - DIRECT ON / AUDIO ON :

DIRECT ON : Turns the subwoofer on and off using the on/off switch.

AUDIO ON: With the switch in the audio on position, the product turns on when it receives an audio signal and turns off after approximately 10 minutes without audio.

4 - SPEAKER OUT: Output for connecting a 4 ohm passive speaker. (Example TPS 408F passive taramps Box)

5 - 0° / 180°: With the key pressed, inverts the phase of the audio signal by 180°. (To correct cancellation)

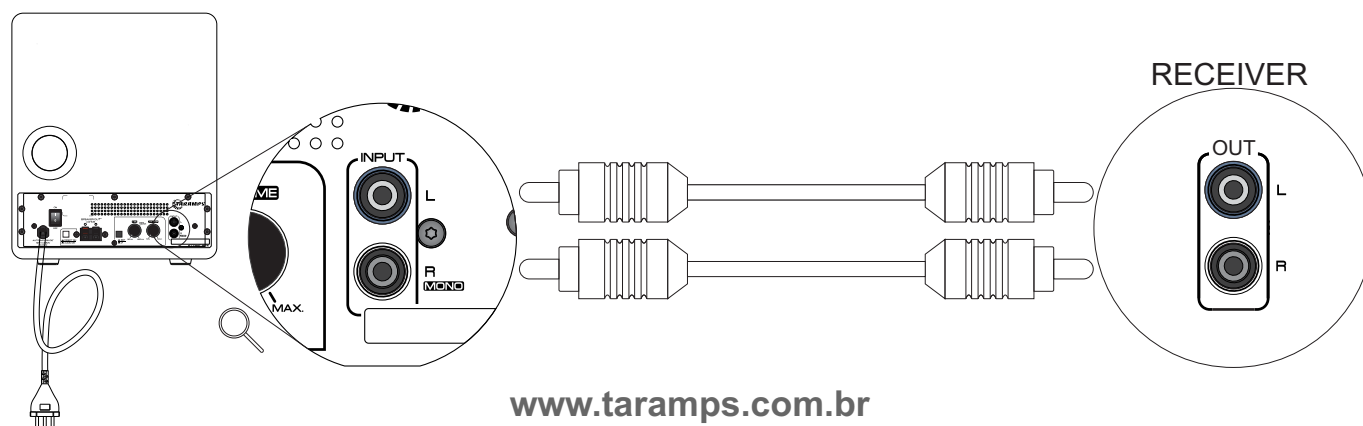
6 - LPF: Low pass filter. Variable adjustment of the maximum cutoff frequency from 50Hz to 250Hz. The point marked on the scale as "Home theater" is a suggestion for using the active box in a movie theater.

7 - Volume: Adjust the amplifier's input sensitivity, which allows a perfect adjustment to the output signal levels of market players.

8 - INPUT (RCA): Audio inputs. Connect them to the RCA outputs of the audio reproduction system, using good quality shielded cables to avoid noise capture. For Mono or LFE connection, use the R input.

Starting The Subwoofer

Connect the receiver/pre output to the subwoofer input.



www.taramps.com.br