

Instruction manual



T 2.800 ProAudio



**PROFESSIONAL
AMPLIFIER
2 x 400W RMS**



The installation of this product must be done by a qualified professional.

Index

- 01 • Introduction**
 - Presentation
- 02 • Important recommendations**
 - Safety
- 03 • Front panel**
 - Rear panel
- 04 • Connection to the AC electrical grid**
 - Speakon Plug Connection
 - Stereo connection example
- 05 • Mono connection example**
- 06 • Technical features**
- 07 • Warranty terms**
 - Customer service

Introduction

Congratulations on your purchase of a Taramps product.

It was developed in a modern laboratory and with the latest technology.

This manual covers all features, operations and instructions to solve any doubt that may arise during the installation. Please take some time to read it carefully in order to ensure the proper installation and the use of all benefits that this product can offer.

For questions, please call **+55 (18) 3266-4050**, e-mail **support@taramps.com.br** or visit www.taramps.com.br.

Presentation

The **T 2.800 ProAudio**, designed to offer power and versatility in different environments, such as churches, concerts, businesses, gyms and homes. With 800 Watts RMS, divided into two 400 Watt channels at 4 Ohms, it comes in the standard 19" rack width size and has automatic dual voltage, making its applications even more flexible.

Thanks to its Class D topology, the T 2800 delivers high acoustic efficiency, with low power consumption and a natural response across its entire frequency range (8Hz to 70KHz), providing an incredible sound experience.

Equipped with balanced audio inputs (P10 or XLR) and standard "Speakon" outputs, the amplifier also offers full audio control with volume adjustments, audio signal indicators, input and output clip indicators, as well as dedicated crossovers (LPF / FULL / HPF) for each channel.

With the Mono/Stereo selector switch, practicality and flexibility are expanded, easily adapting to different configurations.

Important recommendations

- To ensure proper use, read this manual before using the product. It is important that you understand the **CAUTION** contained herein.
- The product must be installed in a secure, well-ventilated location, away from dust, moisture, water, and near heat sources;
- Installation must be performed by a qualified professional;
- Avoid locations exposed to direct sunlight.
- Do not obstruct the ventilation holes on the sides.
- Avoid drops and impacts.
- Carefully observe polarity. NEVER reverse the polarity.
- Whenever removing the product, remove all connections while it is turned off.
- Use good-quality cables and connectors, as poor cables can cause damage to the product, interference, and noise.
- If the product requires maintenance, it must be taken to an authorized service center. This product is not user-serviceable.
- Disconnect the product from the electrical outlet during storms or when leaving it unused for extended periods. - When in use, the external surface of the amplifier becomes hot, especially at the bottom. Avoid contact with this area and keep the amplifier out of the reach of children.
- This amplifier can produce high sound pressure levels. Avoid continuous exposure to levels above 85 dB to prevent hearing damage.
- The speaker output connections may present voltage levels when the amplifier is operating. Make sure the amplifier is OFF before proceeding with any connection or disconnection at these terminals.
- If you wish to dispose of it, do not throw it in the household waste. It should be collected by a used electronics disposal service for proper recycling.

Safety

As you read this manual, pay attention to the safety symbols.



CAUTION

This symbol with “**CAUTION**” is intended to alert the user to the presence of important instructions. Failure to heed the instructions will result in risk of injury to user or product damage.

Front panel



1 - 19" RACK MOUNT HOLE: Use these holes to fix the T.2.800 on the rack.

2 - LED CLIP OUT: Flashing in sync with the music indicates that the amplifier is operating at the threshold of distortion on channel A.

3 - LED CLIP IN: Flashing in sync with the music indicates that the channel A input signal is reaching 8VRMS (start of saturation).

4 - LED SIGNAL: Indicates the existence of an audio signal at the input of channel A of the amplifier.

5 - LED ON: Lit, indicates that channel A is on. Flashing, indicates channel A is on protection.

6 - VOLUME: Channel A volume adjustment.

7 - VOLUME: Channel B volume adjustment.

8 - LED ON: Lit, indicates that channel B is on. Flashing, indicates channel B is on protection.

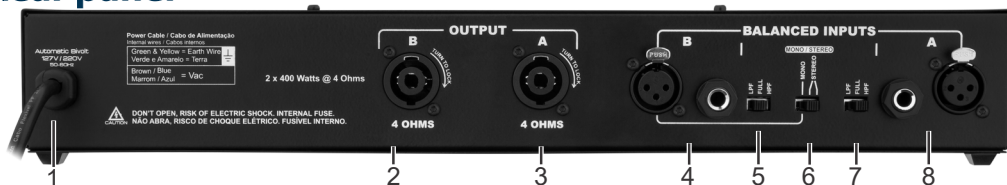
9 - LED SIGNAL: Indicates the existence of an audio signal at the input of channel B of the amplifier.

10 - LED CLIP IN: Flashing in sync with the music indicates that the channel B input signal is reaching 8VRMS (start of saturation).

11 - LED CLIP OUT: Flashing in sync with the music indicates that the amplifier is operating at the threshold of distortion on channel B.

12 - ON / OFF SWITCH: Turns amplifier power on and off.

Rear panel



1 - POWER CABLE: Connect the cable to the AC electrical grid. This product operates on 120V AC or 240V AC (automatic dual voltage).

2 - OUT B: Channel B power output for speakers. Follow the indicated polarity and the recommended minimum impedance. (See figure on page 04).

3 - OUT A : Channel A power output for speakers. Follow the indicated polarity and the recommended minimum impedance. (See figure on page 04)..

4 - B: Balanced audio inputs with P10 or XLR connection.

5 - LPF / FULL / HPF: B-channel crossover.

6 - MONO / STEREO: In the MONO position, you can use only one audio input (INPUT B). The signal is sent to INPUT A internally.

In the STEREO position, you must have two input audio signals.

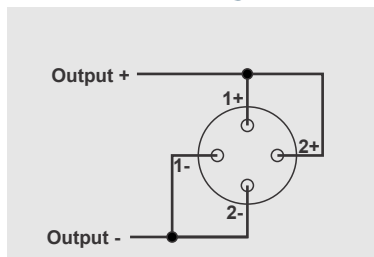
7 - LPF / FULL / HPF: Channel A crossover.

8 - A: Balanced audio inputs with P10 or XLR connection.

Connection to the AC electrical grid

Ensure the wall power can handle the amplifier's maximum current draw.

Speakon Plug Connection



⚠ CAUTION

Due to the presence of voltage at the output terminals when the product is on, avoid contact with them. Risk of electric shock.

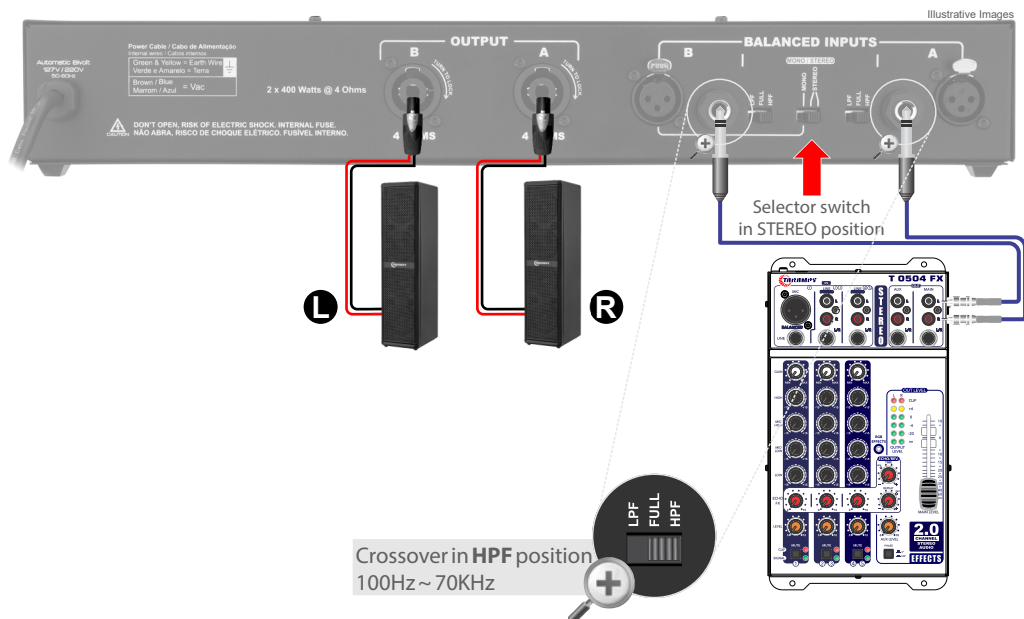
Connect signals with amplifier volumes at minimum.

Connect the output cables only with the product off.

Stereo connection example

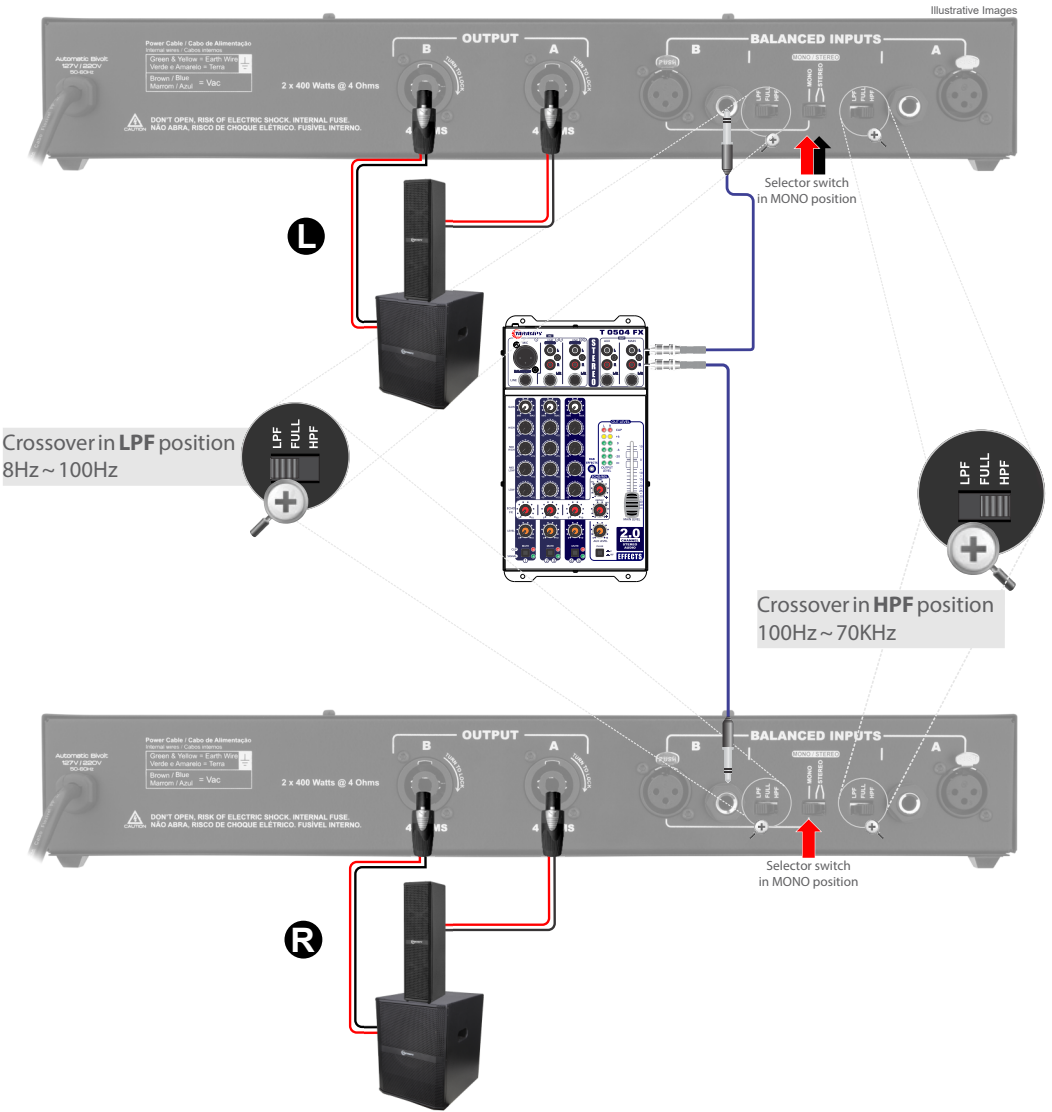
P10 or XLR signal inputs:

To be connected an audio mixer, equalizer, audio processor, receiver, etc...



Mono connection example

P10 or XLR signal inputs:
To be connected an audio mixer, equalizer, audio processor, receiver, etc...



Technical features

Minimum Output Impedance:	4 Ohms
Number of Channels:	02
Maximum power:	800W RMS (2 x 400W RMS)
Input sensitivity:	775mV (0dBm)
Input Impedance:	22K Ohms balanced
Signal-to-Noise Ratio:	>90dB
Frequency Response:	8Hz ~ 70KHz (-3dB) LPF 100Hz 12dB/8 ^a HPF 100Hz 12dB/8 ^a
Crosstalk:	>70dB
THD+N:	<0,07%
Stand-by consumption:	30W-127VAC / 30W-220VAC
Maximum consumption:	1250W-127VAC / 1425W-220VAC
Supply voltage:	127/220 VAC (Automatic dual voltage)
Fuse	20A
Protection	Short in the outputs and low impedance
Dimensions (W x H x D):	482 x 70 x 187mm (18.98" x 2.76" x 7.36")
Weight:	2.60Kg (5.72lb)

*Nominal power with 1KHz sinusoidal signal and 4 Ohms resistive load. (Measured according to IEC 60268-3 Sound Equipment, Part 3: Amplifiers).

Warranty terms

TARAMPS, located at Rodovia Júlio Budisk, KM 30, Alfredo Marcondes – SP, Brazil, 19180-120, warrants this product to be free from defects in materials and workmanship under normal use for a period of 12 months from the date of purchase.

If a defect arises during the warranty period, TARAMPS will, at its sole discretion, repair or replace the unit with a new or refurbished product.

This warranty does not cover:

- Damage resulting from improper installation, water exposure, or unauthorized repairs;
- Broken or tampered warranty seal;
- Misuse or operation outside of recommended conditions;
- Issues caused by accessories, modifications, or third-party components;
- Physical damage from drops, impacts, or natural events (such as flooding or lightning);
- Labor or shipping costs related to removal, reinstallation, or transportation;
- Any indirect damages, losses, or interruptions in product use.

Customer service


For international support, check on our website:

www.taramps.com.br/en/rede-de-assistencias-tecnicas or contact direct the factory support:

Phones: +55 18 3266-4050 / +55 18 99751-4273

E-mail: service@taramps.com.br



 +55 18 3266-4050

Manufactured by:
TARAMPS ELECTRONICS LTDA
TAX ID: 11.273.485/0001-03
Júlio Budisk Highway, SN, KM30
Alfredo Marcondes - SP
Made in Brazil
www.taramps.com.br